

New Communities Strategic Priority

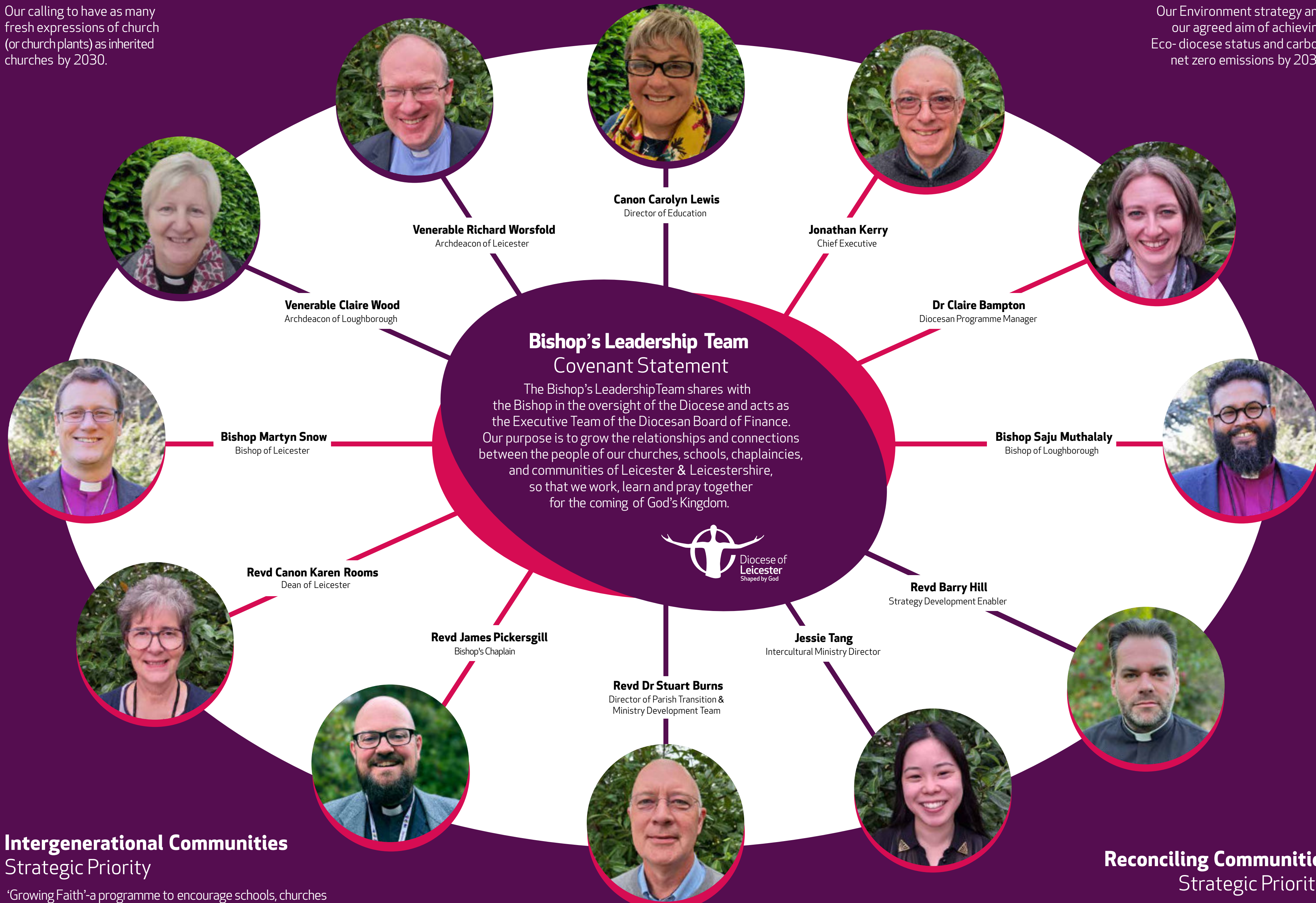
Our calling to have as many fresh expressions of church (or church plants) as inherited churches by 2030.

Intercultural communities Strategic Priority

Our Intercultural Worshipping Communities programme, and our Racial Equity Strategy.

Eco-communities Strategic Priority

Our Environment strategy and our agreed aim of achieving Eco- diocese status and carbon net zero emissions by 2030.



Bishop's Leadership Team
Covenant Statement

The Bishop's Leadership Team shares with the Bishop in the oversight of the Diocese and acts as the Executive Team of the Diocesan Board of Finance. Our purpose is to grow the relationships and connections between the people of our churches, schools, chaplaincies, and communities of Leicester & Leicestershire, so that we work, learn and pray together for the coming of God's Kingdom.


Diocese of Leicester
Shaped by God



Venerable Claire Wood
Archdeacon of Loughborough



Venerable Richard Worsfold
Archdeacon of Leicester



Canon Carolyn Lewis
Director of Education



Jonathan Kerry
Chief Executive



Dr Claire Bampton
Diocesan Programme Manager



Bishop Martyn Snow
Bishop of Leicester



Bishop Saju Muthalaly
Bishop of Loughborough



Revd Canon Karen Rooms
Dean of Leicester



Revd Barry Hill
Strategy Development Enabler



Revd James Pickersgill
Bishop's Chaplain



Revd Dr Stuart Burns
Director of Parish Transition & Ministry Development Team



Jessie Tang
Intercultural Ministry Director

Intergenerational Communities Strategic Priority

'Growing Faith'-a programme to encourage schools, churches and households to work together to enable children and young people to grow in faith.

Reconciling Communities Strategic Priority

Reconciliation is a call to restore relationships in every sphere of life.