

## **Interim Deanery Mission Enabler**

*and Associate Priest for Nether Broughton, Old Dalby and West Vale group of parishes*



## The Diocese Welcome

Thank you for your interest in this role. Please be assured that there are many people praying for this process of discernment, and we trust that you will know God's guidance as you explore whether it is right to apply.

As part of your consideration, it is important to understand that the Diocese of Leicester, like every diocese in the Church of England, is in transition. After a long process of discernment (a process which we called *Shaped by God Together* and which involved much prayer and literally hundreds of small group conversations in every part of the diocese), Diocesan Synod agreed a new framework for the diocese known as *Minster Communities*. ([see more on our website](#)). Anyone coming to work in the diocese therefore needs to be committed to engaging with this new framework and embedding it within the church communities they serve (understanding that it will be applied in different ways in different contexts) and be flexible and prayerful in discerning how their particular role fits and will evolve within this wider framework. This will be explored with you at interview, and, if you are appointed, will be major part of the induction process.

In addition to this, we are on an exciting journey of learning about church planting and fresh expressions of church, and about intercultural mission and ministry – two areas where we have received substantial funding from the national church. We are also committed to exploring intergenerational work, reducing our impact on the environment, and crossing the divides both in the church and in the world. We therefore want people who are open to learning, who are humble in admitting that they don't have all the answers, and yet who are bold in proclaiming the Gospel in word and action.

These changes require not only considerable flexibility and adaptability from clergy and lay ministers but also great resilience. This is why we also place a strong emphasis on wellbeing – seeing this as a partnership where you take responsibility for your own wellbeing, while knowing that there is always support available from bishops and diocesan staff. Additional support is also offered by our partner organisations such as Launde Abbey (retreat centre), St Philip's (interfaith centre) and of course the Cathedral.

I hope that I may have the opportunity of meeting you in the near future, but the meantime be assured of my prayers.

Yours in Christ,



**The Rt Revd Martyn Snow Bishop  
of Leicester**



## Shaped By God Together – a brief introduction

*Our new [Shaped By God Together](#) Minster Communities framework will help our local worshipping communities to grow the Kingdom of God and live out our everyday faith.*

Shaped By God Together (SBGT) is the process through which the diocese is currently reshaping to ensure our ministry and mission is equipped and supported in the best way possible within our vision of the Kingdom of God, and our diocesan finances are used in order to resource our strategic priorities.

As part of this SBGT process, the Diocesan Synod voted strongly in favour of the Minster Communities framework in October 2021. Between 2022 and 2026, every parish, fresh expression of Church, clergy person and lay minister, chaplain and school, will be expected to participate in conversation between local context and the diocesan leadership, in order to determine how they find their place within the framework as we form 20-25 Minster Communities across the diocese. Alongside the structural changes (which are likely to involve Joint Church Councils), we are encouraging all worshipping communities to develop how they enable discipleship and encourage vocations, grow in outwardly focused mission, engage with children, young people and schools, and work in partnership across differences. The development of a healthy culture of wellbeing is also vital.

More detailed information can be found on the Diocesan website the

[SBGT webpages](#). **Claire Bampton, Diocesan Programme Manager**



## Who we are, where we are

Framland Deanery is part of the Archdeaconry of Leicester and is located in the North East corner of the Diocese of Leicester. It is a large rural area with many small village parish churches, and the busy market town of Melton Mowbray is located near the centre of the Deanery.

Framland Deanery is also part of the wider North East Leicestershire area, which is currently in the process of forming two minster communities.

The Nether Broughton, Old Dalby and West Vale group are a group of six rural parishes situated in a beautiful area of countryside along the border between Leicestershire and Nottinghamshire and within the northern part of Framland Deanery.

### Nether Broughton, Old Dalby and West Vale Group of Parishes

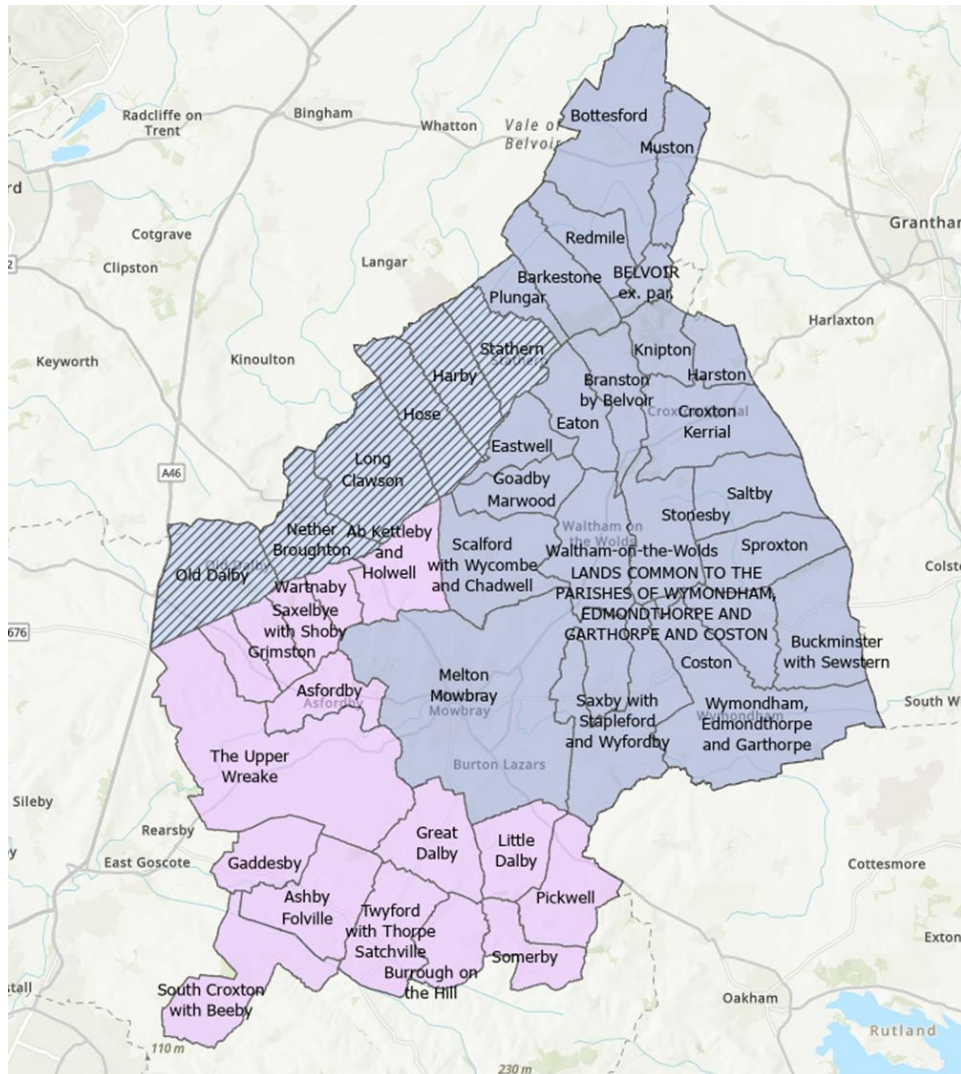
The six parishes of this group of Churches are situated towards the southwestern end of the Vale of Belvoir, a beautiful area of countryside along the border between Leicestershire and Nottinghamshire, just north of Melton Mowbray. It is largely mixed agricultural with several dairy herds. Two villages have dairies making Stilton cheese.

There are a number of other small industries scattered along the Vale with a distinct concentration of various business enterprises at the former Army Base in Old Dalby. The Vale of Belvoir is much valued for the popular recreational activities of cycling, walking and horse riding.

The roads connecting the villages are good. From Stathern at one end to Old Dalby at the other is 10 miles and takes 25 minutes. There is easy access to the A1, M1 and A46. The Vale is flat and so is also suitable for cycling. Melton Mowbray is the nearest town and easily reachable by car or, less easily, by bus. Nottingham, Leicester and Grantham are all drivable in 30-40 minutes and these all offer good rail links to London. Internet access is adequate but mobile phone coverage can still be patchy.

The villages are typical rural communities with a variety of organisations such as the WI, Pre- School, Brownies, the Cricket Club etc. Villages host diverse activities such produce shows, art exhibitions, music festivals, films and plays. Some villagers still work in agriculture but most now commute to centres of work such as Nottingham and Leicester.

There are five primary schools in the West Vale villages, four of which are Church of England schools.



## About the role and the overall vision for mission

This is a three-year fixed term interim role with a dual focus:

1. Enabling growth of mission within the Framland Deanery as parishes move towards the introduction of the minster community framework. Specifically:

- Encouragement of, and support for, Fresh Expressions and other creative missional initiatives, as invited by incumbents and PCCs/parish leadership within the Deanery, particularly as we see new communities emerging from new housing in the northern area of Framland.
- Relational support and encouragement for parishes, church schools and fresh expressions within the Deanery in the development of minster community proposals.
- Engagement in the implementation of any such agreed minster community proposal as a member of the minster community ministry team.

2. To provide ordained ministry locally within the Nether Broughton, Old Dalby and West Vale group of parishes and ministry leadership within some parishes in that group.

Specifically:

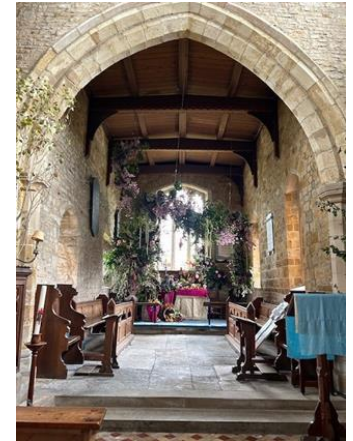
- At Old Dalby, being the named team person in terms of pastoral and ministry support, also providing assistance through being involved on the PCC;
- At Nether Broughton, being one of the named team ministers in terms of pastoral and ministry support.
- At Hose, having a mission enabling role, working with other members of the ministry team in their support of missional/vocational development, in particular through membership of the PCC.

In their deanery mission enabler role, the postholder would also be involved from time to time in the other three parishes in the group, namely Stathern, Long Clawson, and Harby.

It would be expected that the appointed post holder would spend the majority of their time (at least two-thirds) on the mission enabler element of the role, although this would vary through the year in accordance with the demands of festivals and seasons.

## We are looking and praying for a minister and mission enabler who ...

- is a prayerful listener and responsive to context (meeting churches and people where they are at)
- has good understanding of rural parishes and their challenges and experience and ability to engage with rural communities in an approachable way
- has entrepreneurial gifts to maximise opportunities for outreach
- is a skilled enabler of others in mission, able to mentor and encourage
- is a good and effective team player and team leader
- is confident in engaging with discipleship in school settings
- is willing to receive and learn from others as well as to give
- is adaptable in offering their ministry gifts to parishes with sensitivity to context
- is computer literate
- is willing and able to travel, or arrange their travel, between rural villages



## **What we can offer**

### **The Six Parishes**

- Being part of a large lay and ordained ministry team across the six parishes.
- Team of church officers who are experienced in oversight and maintenance of church fabric.
- Good working relationship within the six parishes.
- Ministry team prayer support through daily online prayer.
- Respect for rest days each week.

### **Deanery**

The postholder would become a member of the supportive Deanery Clergy Chapter Team, and key working relationships at Deanery level would include those with the Area Dean and Deanery Lay Chair, together with the Deanery Standing Committee and Deanery Synod.

<b>Church name:</b> St Mary the Virgin, Harby	
<p><b>Who are you?</b></p> <p>A rural parish church, in a village of about 900 people. Surrounded by farmland and the church itself is surrounded by sheep-filled fields owned by Revd Paul Towns (PT) who is licensed to the “Conventional District of Harby”. Revd Sister Mary A’Herne-Smith has PTO here, and there are two Associate Lay Ministers. Just over 50 on the church electoral roll. The majority of the congregation are elderly. Church congregation numbers for services are around 10-25 but many more attend at Christmas, Harvest, Remembrance Day and Easter.</p>	<p><b>Where have you come from?</b></p> <p>The church is very much part of the village community. It is much loved by villagers, whether they come to church regularly or not. The church is officially in interregnum but PT leads it with enthusiasm and love and there is an active PCC with wonderful Church Wardens. The ministry team meets regularly to discuss plans for the future.</p>
<p><b>Where are you going?</b></p> <p>PT is hoping to lead ministerial training from Harby, establishing it as a centre of excellence both locally and further afield. Bellringing – the church is having the bells rehung, including a new one and again, hopes to be a centre for training bellringers of the future. The PCC has chosen not to be part of the Minster Community conversations, believing this is not necessary for Harby, which works well on its own and within the benefice.</p>	<p><b>What are you doing now?</b></p> <p>There is a service in the church every week –8.30am BCP communion; Parish Communion (CW); Choral Evensong (BCP) and a service of intergenerational worship. PT goes into the C of E primary school to lead assembly most weeks and the church hosts school services each term. There are very good relationships that he has built up with the school and families through school. Large events such as the annual village Beer Festival draw in large numbers and are opportunities for mission. Soul filled meanderings – contemplative prayer walks take place regularly. Village lunch held each month.</p>





**Church name:** St Michael and All Angels, Hose

**Who are you?**

We have a small PCC of about 5 members - with younger members working hard on Fund Raising Events to benefit the church.  
PCC voted 'Green' for Minister Community Formation, Area 1 North.  
We benefit from a dedicated Treasurer and PCC Secretary and several supportive volunteers for flower arranging, grass cutting and cleaning.  
Our congregation is small – about 4.  
There is a village CofE school that use the church regularly for worship and festivals. The Foundation Governor sits on the PCC.  
We have a Deanery Synod Rep.  
There is no resident organist.

**Where are you going?**

We are struggling – standing still.  
We do not know what pattern or style of worship would encourage growth of Christianity in our community.  
During interregnum Revd Paul Towns offered to support us along with Harby and Stathern (with Baptisms if held in normal worship/Weddings/Funerals.)  
During interregnum, Revd Simon Shouler pulls together service rota, organises clergy for our monthly Communion and plans regular meetings of Church Wardens.  
We reach out to service leaders to take our Festival Services. Through our Deanery Synod Rep, we have connected with Revd Crystal McAllister (services and Baptisms) and Associate Minister Jo de Graaf (services).

**Where have you come from?**

Historically, the church had a weekly service, but these have gradually reduced over the years.  
Prior to Revd Jamie's retirement, we had 2 services a month as he led a Family Service.  
Previous incumbents visited school at least monthly for Assemblies as well as Festivals.  
Used to hold Village Lunches for Church Funds.  
Many years ago, we had a lively Family Service with a music group and a youth group.  
Church Warden used to lead Worship.

**What are you doing now?**

Villagers use the Church for concerts/tribute acts.  
Associate Minister Jo de Graaf has supported the school for leading Festival Services 2-3 times a term.  
One service held a month – Holy Communion – which is not ideal worship for those new to faith or to church.  
Unlike other churches in the Benefice, we do not have any non-stipendiary clergy in our village or licensed ministers or lay people comfortable to lead services.  
Annual Carol Service usually well attended.  
Usually have a Baptism once a year; wedding once every two years and funerals about 3 times a year.





**Church name: St. Remigius, Long Clawson****Who are you?**

A rural parish cruciform church with a long bell pull from the bottom of the central tower. The Church is right in the middle of the village. Much repaired in 1890. The village is home to Long Clawson Dairy, well known for Stilton Cheese. We have around 50 on the church electoral roll. We have 10 on the PCC. Church congregation numbers for services are around 15 but we often get a well filled Church for services such as Christmas and Harvest. We have a Remembrance Day service actually on 11 November. The Church of England school regularly uses the Church,

**Where are you going?**

Would like to get the parents to take roles within or to take 'family services'.  
We are putting in new heating.  
We have decided not to follow the Minster Community model, we have however always been willing to work with other Churches.

**Where have you come from?**

The church is appreciated.  
We have visitors to look at our windows and visitors who just come to sit and relax.  
The church is used to being interregnum.  
Simon Shouler is the local non-stipendiary priest which allows us to have two communion services a month (one with breakfast).  
Mel Oldershaw is also licensed as an Associate Minister.  
We have several others who take services.

**What are you doing now?**

We have a service every Sunday.  
Compline on 5<sup>th</sup> Sunday if nothing else is arranged.  
We have recently moved the 'family service' which has resulted in much better attendance (moved after consultation).  
There is a coffee morning on Thursdays (temperature permitting).



**Church name: St Mary the Virgin, Nether Broughton****Who are you?**

We are a small rural church on the edge of the village of Nether Broughton in the Vale of Belvoir. We were originally part of the benefice comprising Old Dalby, Saxelbye, Six Hills, Grimston and Wartnaby, but more recently have joined with the West Vale of Belvoir group.

We are supported by the ministry team from this group. Reverend Simon Shouler currently conducts all pastoral services for Nether Broughton and we also receive support from Associate Minister, Mrs Mel Oldershaw.

There are currently 27 people on our Electoral Roll. Although our worshipping community is relatively small, the church has always been very well supported by the wider village community. We have a committed PCC whose members work hard to ensure that the church is financially sustainable.

**Where are you going?**

We are endeavouring to introduce a new generation of parishioners into the worshipping community and would like to engage residents from the many new houses in the Parish.

We wish to maintain the traditional elements of worship that our existing congregation values, but at the same time, we would like to continue to explore different styles of worship which will engage non-churchgoers. We currently have two services each month.

Music has always been important in our church; we are fortunate in having an excellent organist, and hope to expand the music provision in the church.

Whilst we are actively engaging with the Diocese in the Minster Community process, some members of the PCC have reservations about joining and others are totally opposed to the idea.

**Where have you come from?**

The listed Grade II\* building largely dates from the C13th and C14th, though the building was extensively restored in the 1880s. It is surrounded by a beautiful churchyard. Throughout its long history, the majority of services have been traditional, with Holy Communion and Evening Prayer, taken from Common Worship, featuring alongside pastoral services. As a farming community, services like the Harvest Festival and Rogation Sunday have always been celebrated. The church's annual fundraising events, such as the summer fete and Autumn Fair have always proved popular. The morning service for Remembrance Sunday includes an Act of Worship at the war memorial in the churchyard, which is attended by many non-churchgoers.

**What are you doing now?**

In 2020, we introduced a new series of monthly services, entitled 14NB, aimed largely, though not exclusively, at families. They incorporate activities for children, a reflection for the adults alongside singing, prayer and bible readings. Other services have included visits to choral evensong at the Cathedral, Taize style worship, Celtic services and open-air worship. Four weddings and one baptism were held in St. Mary's church in 2024.

A Bible Discovery group has been established, which meets monthly to discuss a particular aspect of the Bible.

We are trying to engage more of the local community in the maintenance of the building and the churchyard; parishioners are now helping with the grass cutting each month. We communicate with the wider community through the Parish magazine and our Facebook page.

We hope to make the church building more accessible by installing a toilet facility and a small servery; having made considerable progress towards this goal, we need help in bringing it to fruition.



## Church name: St John the Baptist, Old Dalby

### Who are you?

A church in the village of Old Dalby (head of the Vale of Belvoir), plus a cemetery adjacent to the school  
 Two services a month (one led by the Methodist church). Our average congregation is 15, however Christmas and Easter services are well supported  
 A growing village with significant housing growth  
 A village with a growing CofE primary school with active involvement with the church. The foundation governor sits on the PCC and a Member (Academy) of the school is also on the PCC  
 A Residential care home next to the church specializing in dementia care  
 We are a PCC of 6,  
 We do not have any non-stipendiary ministry in our village or lay ministry to lead services

### Where are you going?

Opening the church daily  
 Growing an active group of people to maintain the church yard and look after the church  
 Maintaining contact with our 'church family'  
 Trying to engage more people onto the PCC, but this is challenging and we are totally reliant on ministry from the Benefice and Methodist church  
 Trying to understand better what motivates people to engage with their local church  
 Regular services (termly) with the village school  
 Working with the Village History group to better inform people who visit our church.

### Where have you come from?

The presence of a church since medieval times  
 The Knights Hospitaller had a preceptory near by  
 2005-2006 extensive restoration of the church (£300k)  
 A decline in recent years of participation in church both in attendance and support  
 An ageing congregation and PCC, with no natural infill from younger and new residents  
 We have been in interregnum since September 2023

### What are you doing now?

Ensuring worship appropriate for all ages. Introduced a more relaxed modern service once a month to encourage families, though there has been little take up!  
 Introduced a music group to play at services  
 Supporting the community with a weekly friendship group  
 Collection point for Storehouse Melton (Food bank)  
 Improve our online presence and understand how best to communicate with our community  
 Managing the closure and sale of St Marys Six Hills (a small chapel of ease belonging to St Johns that has fallen into disrepair)  
 Striving to make our church welcome and relevant to our community and their needs.



## Church name: St Guthlac, Stathern

### Who are you?

A rural church over 800 years old, maintenance presents a huge challenge

- 3 services a month
- Small Village church with Population 750+
- One of a benefice of 6 parishes with 2 non-stipendiary priests, 2 retired priests and 3 associate ministers.
- Have a Village Local Authority School – who use church for services, school studies and other activities.
- Mainly a small congregation of loyal parishioners and mostly an elderly congregation
- Maintain GDPR email contact with 58 interested villagers, newsletter, Facebook and bi-monthly village magazine.

Will be visiting newcomers as they move into new homes – new estate of 74 houses.

### Where are you going?

Have a system of 'Street Welcomers' to identify newcomers moving into the village and for future significant growth in village population, working jointly with Parish Council for a visit to deliver Church Welcome Leaflet and Newsletter. PC visit with bi-monthly magazine. *(need to check that people are still doing this and give a reminder).*

- Exploring opportunities to increase attendance and especially at family services
- Working to increase regular funding donations
- Continue having church open all day. In visitors' book many comments say what a welcoming church, it feel it's a caring one and well-loved.
- Would like to be able to appoint churchwardens but PCC take on those responsibilities between themselves.

### Where have you come from?

- Most fortunate to have 2 lay led services monthly and a priest for a Holy Communion service.
- Was in Belvoir Benefice now in West Vale Group, now in for more change!
- A committed hard-working PCC and Events Committee
- Various events held in church .
- New members to the church and have replaced those who have passed away or moved, so average attendance of 14 remain static.
- Difficult to attract younger and families to services although we have tried several approaches.
- Many were reluctant to come following Covid, but most now returned.
- Have had good links with school. The Chair of Governors, another governor and school secretary are members of our congregation.

### What are you doing now?

- Tower restoration has now been successfully completed costing £110,000 from fund-raising and grants. In near future also need at about same amount for chancel cracks repair.
- Planning to develop further use of social media.
- Events Committee has successfully planned and delivered numerous events that continue to raise funds for church.
- Annual Horticultural Show organised and with church raising considerable funds for church, raising about £2000+ annually.
- A collection point for Grantham Foodbank
- Excellent information in the Communications Corner leaflets, especially the historical, for visitors.



## Meet the Team



**Revd Paul Towns**



**Richard Hedley**



**Revd Canon John Barr**



**Jo de Graaf**



## Meet the team



**Mary Briant**



**Revd Sister Mary A'Herne-Smith**



**Revd Simon Shouler**



**Mel Oldershaw**

## Where you will live

### The Vicarage 1 Church Lane Old Dalby Melton Mowbray LE14 3LB



The Parsonage House is a detached four bedroomed house, erected on former glebe land off Church Lane, Old Dalby in 1987. The house was erected by A J Stimpson & Son of Somerby to the design of Messrs Shakespear McTurk & Graham of Market Harborough and is situated approximately 400 metres from the parish church.

The house is constructed with external cavity walls off a plastic tape and blue brick damp proof course with facing brick to all elevations. The pitched roofs have a plain tile covering, with stained timber fascia and soffits, and cement verge details to Gables, with tile hanging to cheeks of Dormers.

All windows are double glazed in brown UPVC to house (2018 replacement). Rainwater goods are of round profile black plastic. There is a single chimney providing a flue to the fireplace in the Sitting room.

A gas fired wall mounted boiler in the Utility Room heats radiators to all principal rooms and supplemented by an immersion heater, provides domestic hot water. Foul and storm water drainage connects to the public sewers to Church Lane.

The property has a tarmac driveway and car hardstanding. The grounds are laid predominantly to lawn and are enclosed wooden post and rail fencing to the western, playing field, side boundary and garden rear boundary and close board fence to the eastern side boundary





