

1

Church name: St Peter's Saltby

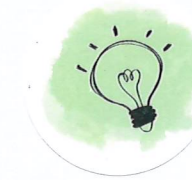
Date: April 23

Who are you?



Where have you come from?

Existed from 12th Century



Where are you going?

Keeping regular services in our precious building



What are you doing now?

Providing worship vicar led and keeping building maintained ourselves



Where are you seeing the Kingdom of God emerging?

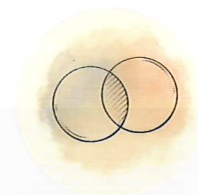
Take issue with verb emerging. Kingdom of God has been around since AD

**What are you fearful about?**

How Minster Communities can possibly function

**What are you hopeful for?**

Things do not change significantly

**How you can pray for us.**

1

Church name: ST. PETER'S CHURCH, SAXELBYE

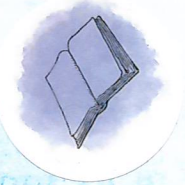
Date: 20/4/2023

Who are you?

The PCC of ST. PETER'S CHURCH,
SAXELBYE

Where have you come from?

We are a small agricultural
community, in a benefice of
similar parishes



Where are you going?

Through the minster process - into a
much larger group

What are you doing now?

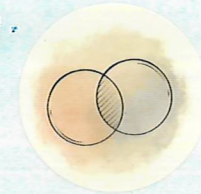
Providing 2 services a month to a
small congregation, but with a much
larger congregation at festival
services. We are also maintaining
the church building.

Where are you seeing the Kingdom of God emerging?

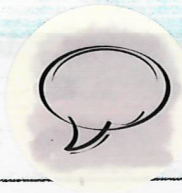
The Church is valued by the village residents, whether they attend services or not

**What are you fearful about?**

That both members of the congregation + PCC are ageing.

**What are you hopeful for?**

That any reorganisation of parishes into larger groups will not harm the development of relationships between the church + residents of the village, who may be potential church goers and supporters

**How you can pray for us.**

Daily and as a congregation in services.

Who are you?

A small rural congregation (10 volunteers max) with a large medieval building, working hard to reach out to the community to be sustainable. (this is church – but we are working with the village slowly but surely to create a wider community)

Where have you come from?

An ever decreasing interest in religion but a vociferous voice if closure of historic building is mentioned.

Where are you going?

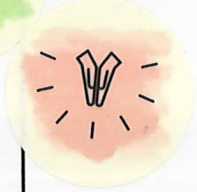
Strengthening links with the primary school in the village and community by trying to awaken fresh interest in using the building in a sustainable way ie other groups/ clubs/ meetings, hence wish for community room within the church.

What are you doing now?

- School work
- Clubs
- Community room development
- Community and benefice office
- Social events

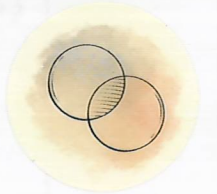
Where are you seeing the Kingdom of God emerging?

Spring flowers



What are you fearful about?

The ever rising prices, more and more red tape, expectation to use the firms on the diocesan list, less and less input from the diocese, less and less volunteers, no regular commitment, unrealistic input /demands from 'do-gooders'

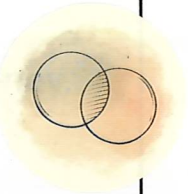


What are you hopeful for?

That the Church of England and all the Diocese work towards taking religion out of buildings and church buildings out of religion ie a national approach to sustainable religious centres and a representative number of historic buildings maintained to allow religion on the scale required but with community growth in caring and need.

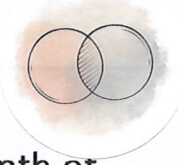
How you can pray for us.

We pray all the time. We worry about how we shall continue, about mo lack of personnel, the building



Who are you?

Within South West Framland, the Burrough Hill, South Croxton and Upper Wreake Benefices are in a Cluster with shared administration. SWF is in turn part of the Framland Deanery, with its matrix of ministers sharing parochial responsibilities with a range of Deanery-wide ministries. Among us there is a willingness and openness to embrace changes.

**Where have you come from?**

We have worked collaboratively in the Southwest Framland group of 16 churches for more than 15 years. And share in the groups centralised administrative provision.

Where are you going?

- Endeavouring to respond to Diocesan strategy for (a) depth of discipleship (b) growth in number of disciples (c) serving the specific needs of our rural communities.
- Recognising that Diocesan leadership has stated its intention to invest in time, resources and a focus on equipping, we await to see results of this at the local level.
- Seeking to continue to find ways to serve and encourage our congregations and communities, including building sustainable relationships with young people and new residents in each Parish, and offering pastoral support throughout the Benefice.
- Seeking to utilise our resources to build an inclusive, sensitive and available church.
- Making more creative use of Church buildings as places which can be used for a variety of events, both Christian and secular. This will involve engagement with others to fundraise for ongoing repair, restoration and improvements to our churches, and thereby strengthen friendships and relationships.

What are you doing now?

Rural parishes, renowned for friendliness and community spirit. All within about ten minutes' drive of each other.
Local economy revolving around farming, equestrian, and small service-based industries; there are pubs, which include restaurant facilities, as well as farm shops/cafes. National Cycle Route 64 weaves its way through the Benefice.
Beloved ancient church buildings.
Elderly congregations/church membership with most people in their 70s or above. This diminishes our ability to serve our churches and communities due to restrictions of time, health, personal finances.
Welcoming of input from Pioneers and other ministers in support of our local clergy.
Shared House for Duty Associate Priest
Services held on a rotational basis



Where are you seeing the Kingdom of God emerging?

Largest village and considered by Melton Borough council to be most viable 20 on the electoral roll

Arnhem Parade and Commemoration service, commemorating the 10th Parachute Regiment who were based around Somerby prior to Operation Market Garden in WW2; this is an important event for the village and the "Friends of the 10th".

Grade I listed building and receives regular visitors

Good developing links with the Somerby School

Good local amenities: award winning pub & small shop, medical practise village Memorial Hall host a variety of events, allotments and large equestrian centre.

Bus service to the nearby Market town of Melton Mowbray & Oakham

Local groups, i.e., Photography Club, Gardening Society, Choir, Community Hub, lay prayer & meditation group.

The church is open during the week

Two large developments are underway, expanding the size of the village.

Annual Christmas Tree festival

What are you fearful about?**What are you hopeful for?**

Resolve the current financial crisis

Aim to raise funds for re-ordering the church to include

Kitchen/toilet facilities

Encourage younger people to come to church

How you can pray for us.

Who are you?

South Croxton is a small friendly village of just over 100 dwellings, villagers are supportive of events within the village and show a willingness to help with church events such as the garden fete, church and churchyard cleaning/tidy up events.

South Croxton already works as a part of the SWF group which comprises 16 of churches within 3 Benefices, we also share admin and PCC meetings within the South Croxton Benefice.

The Parish combines South Croxton with Beeby. These communities work closely with each other

Where have you come from?

The South Croxton Group Benefice was formed, as others at that time at in the Framland Deanery, at the beginning of the 1990's. It is made of the communities of Ashby Folville, Barsby, Beeby, Gaddesby, John O'Gaunt, South Croxton, Thorpe Satchville and Twyford.

For half of the groups existence, it has been a member of the South West Framland Group.

Each village sending a member to be part of the Group Council of 16 churches working closely with each other and sharing a central administration based in the benefice at Twyford Parish Church

The benefice has experience of working collaboratively with others and the Minster Community documents produced identify in an honest and open way a desire to continue doing that.

Where are you going?

To work within and for the community.

Encourage a Christian community within the area across all age groups.

What are you doing now?

The local Young Farmers regularly give their time as a part of the groups voluntary service to the wider community.

The Church is a local landmark as it is floodlit at dusk.

We regularly hold a pet service, which is well supported locally.

Is this about the Kingdom of God? or just local community?

spirit:

Where are you seeing the Kingdom of God emerging?

The Parish combines South Croxton with Beeby. These communities work closely with each other
The Church is a local landmark as it is floodlit at dusk.
We regularly hold a pet service, which is well supported locally.
The local Young Farmers regularly give their time as a part of the groups voluntary service to the wider community.
villagers are supportive of events within the village and show a willingness to help with church events such as the garden fete, church and churchyard cleaning/tidy up events.

What are you fearful about?

What are you hopeful for?

To work within and for the community.
Encourage a Christian community within the area across all age groups.

How you can pray for us.

This could be village hall activity.

Where is God at the Sible in all of this?

Who are you?

An ancient church building. 800 years of history. Parish of 175 residents approx. Few are regular worshippers. Most probably regard themselves as C of E. Church is focal point in the village for worshipping and non-worshipping parishioners alike. Point of reference and refuge for significant occasions. Church building and churchyard highly valued by all. Small worshipping congregation fighting to survive: reducing in numbers year on year for a variety of reasons. Group benefice: some people unwilling to travel for worship beyond their own parish.

Where have you come from?

6 parish benefice has endured several periods of interregnum over the years. Historically full time clergy person living in the benefice. More recently, a half time stipendiary clergy person living in the benefice until approx 2016. After further interregnum a full time stipendiary clergy person now shared with the adjoining benefice living outside our parish group. Worship now occurs only once every 8 weeks in each parish, on a rota basis.

How will we help those people?

Where are you going?

Fighting hard to keep church building open. Fighting to keep connection with non-worshipping parishioners to keep church relevant. Fighting to remain financially viable as reduced number of services per annum reduce income from offertory collections. Response to plea for regular donors/givers suggests funding for upkeep of building attracts funds from parish, whereas Parish Gift/ Diocesan funding much more difficult. Progressing all matters very difficult. Treading water constant.

What are you doing now?

Striving to increase & maintain communication with community via website and regular door to door newsletter. Striving to offer "festival" and commemorative services to attract non-regular worshippers when ever possible (Mothering Sunday, Harvest, Carol Concert, Queens Jubilee etc.) Engaging with retired and lay clergy to ensure worship is covered when over committed parish priest is unavailable / unwell. Outreach by PCC members to engage & join with other village groups to maintain & increase presence / contribution / fellowship from church leaders in the wider community. Pastoral visiting when ever possible. General care & concern for those around us.

Sorry, we ran out of time!

Where are you seeing the Kingdom of God emerging?

????

What are you fearful about?

That in spite of determination of PCC members and the worshipping members of our community, the re-organising of the Diocese (SBGT & Minster Community) may lose us our church in spite of our best endeavours. The church is the remaining focus of faith and spiritual direction in our village. Our efforts may count for nothing in the long run.

What are you hopeful for?

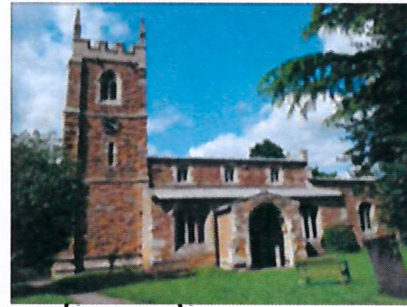
That we can maintain the link between the church and the many visitors who come to the building for peace and refreshment outside times of worship. That we can keep the link with all comers and keep the door open . Continual involvement of non-worshippers by making them feel their contribution is valuable to us. Continued reservation of parish grave space through PCC, to make our church yard viable and inclusive

How can others pray for you?

We're not sure we understand the question! In our dilemma we were hoping the Diocese was praying for us !..but perhaps our response should be that we must all pray for one another. For our part we hope in doing so we succeed in bringing back into focus the spiritual purpose for which the church exists, as we currently find ourselves overwhelmed with administration to the exclusion of contemplative time and prayer

Who are you?

- A rural church over 800 years old, maintenance presents a huge challenge
- 3 services a month
- Small Village church with Population 750+
- One of 6 parishes, which share a priest and 3 non-stipendiary clergy. Together we pay sufficient in Parish Contributions to cover cost of a priest.
- Have a Village Local Authority School – who use church for services, school studies and other activities.
- Mainly a small congregation of loyal parishioners and mostly an elderly congregation
- Maintain GDPR email contact with 58 interested villagers, newsletter, Facebook and bi-monthly village magazine



Where have you come from?

- Most fortunate to have some lay led services
- Was in Belvoir Benefice now in West Vale Group, now in for more change!
- A committed hard-working PCC and Events Committee
- Various events held in church
- New members to the church and have replaced those who have passed away or moved, so average attendance of 14 remain static.
- Difficult to attract younger and families to services although we have tried several approaches.
- Held services when allowed through Covid, but many reluctant to come but most now returned.
- Good links with school Chair of Governors and school secretary are members of congregation.

Where are you going?

- Have set up a system of 'Street Welcomers' to identify newcomers moving into the village and for future significant growth in village population, working jointly with Parish Council for a visit to deliver Church Welcome Leaflet and Newsletter. PC visit with bi-monthly magazine.
- Exploring opportunities to increase attendance and especially at family services
- Working to increase regular funding donations
- Continue having church open all day. In visitors book many comments say what a welcoming church and feel it's a caring one.
- Would like to be able to appoint churchwardens but PCC take on those responsibilities between themselves.

What are you doing now?

- Launching village-wide Restoration of Tower Appeal and to obtain grants. £110,000 required. In near future also need same amount for chancel cracks repair.
- Formation of a Worship Group to take an active part and to lead services.
- Planning to develop further use of social media
- Events Committee has successfully planned and delivered numerous events that continue to raise funds for church.
- Annual Horticultural Show organised and with church raising considerable funds for church. 2022 raised £2000+
- A collection point for Grantham Foodbank
- Excellent information in the Communications Corner leaflets especially the historical for visitors.

Where are you seeing the Kingdom of God emerging?

- Recently gained 2 new regular members following funerals and one family.
- Expansion of a local lay ministry and formation of a new worship team.
- Increased numbers on the PCC
- More readers of lessons at services
- An active events committee
- Interest in our special services eg Celtic, Songs of Praise, invites to bereaved to All Souls service, Queen's Platinum Jubilee.
- New members from Stathern joining the Vale Choir supporting our group churches.

What are you hopeful for?

- A new approach to help Increase church numbers especially those of younger people and young families.
- Strengthen our relationship with our primary school
- Successful in obtaining grants for essential church repairs to tower and chancel.
- To be able to support our generous giving to other charities
- A congregation that is open to change and to the challenges it brings

What are you fearful about?

- The proposed restructuring of the Diocese. Lack of paid stipendiary clergy and might not even get a monthly communion service.
- Lack of central administration and will increase church workload
- Possible no continuity of the same priest and result in lack of face-to-face priest contact and likely to impact on religious guidance.
- Village community is complacent and unaware how the church operates – 'the church is always there attitude' and the funding required to run it.
- Lack of funds that would result in church falling into disrepair and possibility of having to close
- Increase in contributions to Diocese but with a decrease in direct ministry access
- Lack of funds to support the fabric of the church building.

How you can pray for us.

- Include in our intercessions that the diocese can make the right decisions and changes to support the churches in their mission as a church and the way forward in the new minster community formation process.
- To give the appropriate guidance, support and direction.
- That you are open minded, flexible and able to hear what God wants and what the people both inside and outside the church are seeing and saying.