

The Diocese Welcome



Thank you for your interest in this role. Please be assured that there are many people praying for this process of discernment, and we trust that you will know God's guidance as you explore whether it is right to apply.

As part of your consideration, it is important to understand that the Diocese of Leicester, like every diocese in the Church of England, is in transition. After a long process of discernment (a process which we called *Shaped by God Together* and which involved much prayer and literally hundreds of small group conversations in every part of the diocese), Diocesan Synod agreed a new framework for the diocese known as *Minster Communities*. ([see more on our website](#)). Anyone coming to work in the diocese therefore needs to be committed to engaging with this new framework and embedding it within the church communities they serve (understanding that it will be applied in different ways in different contexts) and be flexible and prayerful in discerning how their particular role fits and will evolve within this wider framework. This will be explored with you at interview, and, if you are appointed, will be a major part of the induction process.

In addition to this, we are on an exciting journey of learning about church planting and fresh expressions of church, and about intercultural mission and ministry – two areas where we have received substantial funding from the national church. We are also committed to exploring intergenerational work, reducing our impact on the environment, and crossing the divides both in the church and in the world. We therefore want people who are open to learning, who are humble in admitting that they don't have all the answers, and yet who are bold in proclaiming the Gospel in word and action.

These changes require not only considerable flexibility and adaptability from clergy and lay ministers but also great resilience. This is why we also place a strong emphasis on wellbeing – seeing this as a partnership where you take responsibility for your own wellbeing, while knowing that there is always support available from bishops and diocesan staff. Additional support is also offered by our partner organisations such as Launde Abbey (retreat centre), St Philip's (interfaith centre), Community of the Tree of Life (residential and dispersed community for young adults) and of course the Cathedral.

I hope that I may have the opportunity of meeting you in the near future, but in the meantime be assured of my prayers.

Yours in Christ,

A handwritten signature in black ink, appearing to read 'Martyn Snow'.

The Rt Revd Martyn Snow

Bishop of Leicester

Shaped By God Together – a brief introduction

Our new [Shaped by God Together](#) Minster Communities framework will help our local worshipping communities to grow the Kingdom of God and live out our everyday faith.

Shaped By God Together (SBGT) is the process through which the diocese is currently reshaping to ensure our ministry and mission is equipped and supported in the best way possible within our vision of the Kingdom of God and our diocesan finances are used in order to resource our strategic priorities.

As part of this SBGT process, the Diocesan Synod voted strongly in favour of the Minster Communities framework in October 2021. Between 2022 and 2026, every parish, fresh expression of Church, clergy person and lay minister, chaplain and school, will be expected to participate in conversation between local context and the diocesan leadership, in order to determine how they find their place within the framework as we form 20-25 Minster Communities across the diocese. Alongside the structural changes (which are likely to involve Joint Church Councils), we are encouraging all worshipping communities to develop how they enable discipleship and encourage vocations, grow in outwardly focused mission, engage with children, young people and schools, and work in partnership across differences. The development of a healthy culture of wellbeing is also vital.

More detailed information can be found on the Diocesan website in the [SBGT webpages](#).

Claire Bampton, Diocesan Programme Manager



Message from the Board of Patronage: Woodfield Team of Churches

At the heart of the Benefice Vision Statement is the aim of increasing the number of disciples of Jesus, nurturing the faith of those who are Christians and growing your capacity to serve your communities. As Patron, the Leicester Diocesan Board of Patronage is looking forward to working as partners in the discernment process alongside the Woodfield Team to help further these pivotal aims. Today the role of Patron is much changed. We are involved in the appointment process as a friend and advisor and we act as a support for the Team Rector once in post. Our priority as patrons for this post is to seek the appointment of an inspiring, collaborative spiritual leader, committed to outreach, who upholds the importance and centrality of the Bible in worship, preaching and prayer and who clearly buys into the practical ways you have outlined in this profile for realising the Team's vision.

The DBP very much looks forward to cooperating with the Woodfield Team both in the context of this appointment and into the future.

With very best wishes,

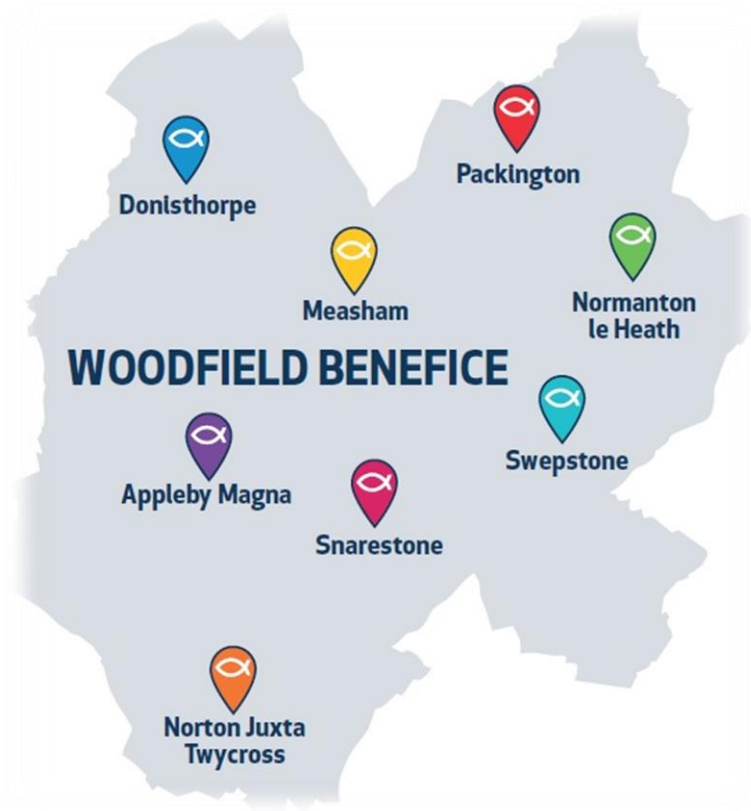
David Wilson

Canon Professor David Wilson, Chair

Some examples of our varied Community engagement

(from left to right: Coffee and Cake at Appleby, lunch light at Donisthorpe, holiday club at Measham)





Hello and a warm welcome from the Woodfield Team!

The benefice, within the North West Leicester Deanery and the Loughborough Archdeaconry, comprises five parishes:

- The Appleby Group
 - St. Michael and All Angels, Appleby Magna
 - Holy Trinity, Norton Juxta Twycross
 - St. Bartholomew, Snarestone
 - St. Peter, Swebstone (with Newton Burgoland)
- St. John The Evangelist, Donisthorpe (with Moira and Stretton-en-le Field)
- St Laurence, Measham
- Holy Trinity, Normanton le Heath
- Holy Rood, Packington

'Woodfield' is taken from the name of a nearby coal seam and was chosen as our team's name to reflect the strong mining heritage in the area, while highlighting our current much greener landscapes.

The collieries are long gone, the sites are rewilded, and now the Woodfield Team encompasses farming communities, some light industry, and has welcomed many new residents who commute to the nearby cities.

Situated at the heart of the National Forest, we want to make God's love known through our relationships with our neighbours in our constituent villages.

As a team, we seek to do together what we can do better together and to deliver locally what is best delivered locally.

Doing together what is better done together, and delivering locally what is better delivered locally.

The local area

We are located on the western edge of North-West Leicestershire, bordering Derbyshire, Staffordshire, and Warwickshire.

- We are close to junctions 11 and 12 of the M42/ A42 and have good road links to Birmingham, Leicester, Derby and Nottingham
- London is only 1 hour 20 minutes by train from Nuneaton
- Birmingham and East Midlands airports for international travel are within easy reach

The house associated with this role is next to the church on Measham High Street. Local amenities include a health centre, pharmacy, dental surgery, library, post office, leisure centre, two small supermarkets and other shops.

There is easy access to walking and cycling routes including the [Ivanhoe Way](#) and the [Ashby Woulds Heritage Trail](#). [The Woodfield Walk](#) is a 23-mile hike which links all eight churches in the benefice.

Local family attractions include [Twycross Zoo](#) and [Conkers](#) activity centre.



Schools

We seek to keep children and families at the centre of our ministry and are exploring 'Growing Faith' as a means to support and fulfil this area of mission. Members of our congregations serve as school governors within the Church of England schools. Links to the schools within the boundaries of the benefice are provided below.



Open the Book visits several of our schools

- [Oakthorpe Primary School](#)
- [Snarestone C of E \(A\) Primary School](#)
- [Newton Burgoland Primary School](#)
- [Donisthorpe Primary School](#)
- [Packington Church of England Primary School](#)
- [Measham C of E Primary School](#)
- [Sir John Moore CE \(A\) Primary School, Appleby Magna](#)

OUR VISION

We are a collection of parishes, seeking a flourishing future. With your help, in time, we will move into a newly formed Minster Community, which we pray will bring us renewed focus and fresh energy to achieve our aims:

- to grow as disciples of Jesus Christ - to grow in faith.
- to grow in service to God and our neighbours.
- to grow in the number of people worshipping God and learning to be Christ's disciples.
- to grow in our understanding of how to care for and promote the health of the natural world that God created

Doing together what is
better done together,
and delivering locally
what is better
delivered locally.



REALISING OUR VISION

We will realise our vision by:

- working locally with schools and villagers, welcoming the community into our buildings for both religious and secular activities
- developing a range of both clergy and lay-led worship
- extending pastoral care to our congregations, clergy and lay team and our communities
- taking forward the Ecochurch initiative, demonstrating and encouraging care for creation within our communities



The Woodfield Team Prayer

God our Father, you long to draw all people into your love; increase in number your church throughout the Woodfield Team, deepen us as followers and learners of Christ and give us courage to share the good news of your kingdom. We pray this in the power of your Spirit, to the glory of Jesus Christ our Lord. Amen



WHO WE ARE LOOKING FOR

The priest who will join us on the next phase of our journey is:

- confident in preaching and leading worship
- an excellent communicator, and empathetic with the church family and the wider community
- a successful leader of change, supportive of colleagues and congregations through complex, evolving challenges
- an experienced and successful organiser and manager
- open minded, empowering and energising towards new leaders and church members taking on new responsibilities
- ready to embrace change and to drive new initiatives



The new post holder will:

- teach and preach in a variety of contexts, relating The Bible to current local and world issues faced by Christians today
- support the delivery of intergenerational worship in different contexts from parish communion to breakfast church and contemplative prayer
- encourage our pastoral care
- welcome the wider community to church for occasional offices and festivals, embracing the opportunity to increase our numbers
- lead, manage and direct the team and be naturally collaborative and guide us in our transition to Minster Communities
- strengthen links and partnerships between the parishes, communities and schools

WHAT WE CAN OFFER

- A warm welcome into our church families and our prayerful and practical support
- The support of a Team Administrator
- Fellowship, friendship from a Christian people who want their priest to thrive
- A diversity of regular worship, welcoming new ideas and embracing opportunities
- Enthusiastic hard-working PCC members and Churchwardens, retired clergy and Lay Readers and the ability to deliver lay-led services
- Good links between our church communities and the village primary schools
- Well-maintained church buildings with some church hall facilities
- Children and family work across the benefice
- Fellowship support groups
- Websites and Social media connections

LOOKING TO THE FUTURE

As a collection of parishes, seeking a flourishing future, we would like you to help us to take the next steps on that journey.

With your help, and with diocesan support, we will soon begin the move into a newly formed Minster Community, which we hope will bring us renewed focus and fresh energy to achieve our aims:

- Becoming more like Christ
- Reaching those we currently don't
- Growing in discipleship, influence, and number

We are praying that you are the right person to help us with this. If we feel right to you, we look forward to meeting you when you apply for this role.



Our worship and services – A sample rota



Woodfield Team October 2023

	Friday 29 th September		Saturday 30 th September			Sunday 1 st October		
Team Weekend	Appleby - 7 pm Team Prayer, Praise & Prosecco		Measham - 10 am – 4 pm Team Prayer & Pilgrimage Day: In search of God's Heart led by Jim Bailey (Northumbria Community). BYO lunch			Packington - 10.30 am Team Harvest Praise with HC followed by ploughman's lunch		Measham - 4 pm Confirmation Service led by Bishop Saju
	Measham	Donisthorpe	Normanton	Packington	Appleby	Swepstone	Snarestone	Norton
8th October	Harvest Lay led	Harvest Clergy led		MP Clergy led	Harvest HC & Kids Kingdom Clergy led		HC Clergy led	
15th October	MP Clergy led	Lay led	Harvest Clergy led		MP Clergy led	HC Clergy led	Harvest Lay led	HC
22nd October	Baptism Clergy led	HC Clergy led		HC Clergy led	MP & KK Clergy led			
29th October (Team Services)			Team HC Clergy led		Team HC Clergy led			

Wednesday 4th October - Appleby HC 10.00am; Wednesday 11th October - Packington HC 10am; Wednesday 18th October - Measham HC 10am;

Wednesday 25th October - Donisthorpe HC 10.00am.

Fri 13th Oct - Harvest Supper, Snarestone 7pm; Sat 28th Oct - Harvest Supper with Songs, Swepstone 6.30pm; Fri 20th Oct - Harvest Fish and Chips, Measham 7pm;

Sat 28th Oct - Lights of Love, Measham 2pm

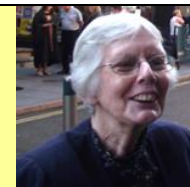
[The Parish of Appleby Magna and Swebstone with Snarestone and Norton Juxta Twycross](#)

The 4 churches of The Appleby Group have been a joint parish since 1994. The PCC consists of the Team Vicar + 9 lay members + 2 non-voting. The main business of each church is devolved to the 4 District Church Councils. Safeguarding Officer is a PCC role. The PCC only meets a few times each year, with some decisions decided by email responses. Thanks to a plethora of volunteers, the monthly [Parish Newline magazine](#) is delivered to 1150 homes across the 5 villages, a reminder dropping on the doormat that whilst village pubs and shops have closed – Christ and his church is still here.

[Holy Trinity Church, Norton Juxta Twycross](#)



Statistics 2022		Individual Parish details	
Baptisms	0	Village population	100 households
Weddings	1	Electoral Roll	17
Blessings	0	DCC members	Team Vicar + 4
Funerals	0	Meeting frequency	3 – 4 times per year
Interments of Ashes	1		
Av. Sunday Attend.	6		



Pauline Bee
Warden



The small village of Norton Juxta Twycross sits on the southern edge of the benefice, bordering Warwickshire. Although historically housing estate workers from the now demolished Gopsal Hall, it is now a dormitory village. Norton has a village Memorial Hall which can be used by the church for events. There are no village school, pub or shop and very limited public transport, however Twycross Zoo is within the village boundary. Norton is in a joint civil parish with Twycross and Orton on the Hill and lies within Hinckley and Bosworth Borough council (a different archdeaconry). Norton church is not linked with any school.



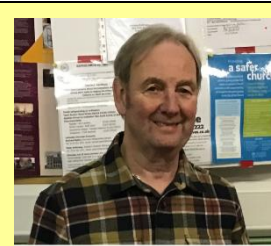
Whilst attendance at Sunday services is low, the church is supported within the village in different ways. There are monthly coffee mornings which fundraise for the church and allow social outreach within the village community. Various villagers take turns on the church cleaning and flower rotas. The church also holds well-supported church breakfasts and a summer barbeque, and we have a stall at the annual Village Fete.

Being a medieval church, sitting on a clay hillside, there will always be building issues. In 2012 we updated the rainwater drainage system and in 2022 we completed a large grant-aided project to re-tile one of the roof faces, replace the ceilings and carry out various internal plaster repairs. Villagers also gave generously towards repairing the church clock.

Regular Sunday congregations are small but occasional informal specials, such as our mid-week evening 'Celebrating Christmas', bring a good attendance. Holy Trinity also hosts the Christmas Eve midnight communion service every other year which is a wonderfully peaceful candlelit service. As expected for such a small village there are only occasional baptisms, weddings and funeral services. The church building is open each weekend for visitors and those seeking a quiet space. We hope to transform part of the churchyard into a quiet garden, based around a large Jubilee Oak tree.

St Michael and All Angels, Appleby Magna

Statistics 2022		Individual Parish details	
Baptisms	3	Village population	About 1300, 580 households
Weddings	1	Electoral Roll	45
Blessings	0	DCC number of members	7 + 2 non-voting
Funerals	10	Meeting frequency	Every 3-4 months
Interments of Ashes	4	Churchwarden	Colin Middleton
Av. Sunday Attend.	20		



Colin Middleton Warden



Appleby Magna and Parva were traditionally mining and farming based, but today are chiefly commuter communities, due to the closeness of the M42. There are several historic buildings in the village, including the grade 1, Sir John Moore School dating from 1697. There is a strong sense of welcome, encouragement and togetherness within our church family, with good teamwork and people providing help and support where needed. New people moving into the village have reduced our age profile and we are optimistic and keen to nurture our mixed age congregation.



There is a quiet depth of faith and though it is conservative in many ways, there is a strong commitment to marry the traditional and more modern approaches to worship. We usually have a Holy Communion on 2nd Sundays and a Morning Prayer on 4th Sundays each month, led by a ministry team member. Kids' Kingdom group meets in the church hall for part of the services. We all enjoy their feedback about their activities at the end of the service. On 3rd Sundays we usually hold a lay-led Sunday People or Songs of Praise service. We also host mid-week Holy Communion on the 1st Wednesday of each month. The Lights of Love, D-I-Y Nativity, and Christmas Eve Carols services are particularly appreciated. The Church building dates from the 14th century with a major refit in the 1800s. It is a large church for a small village, so presents many challenges, but several major repair projects have recently been completed, with more still to be done.

We have a good relationship with Sir John Moore village primary school. They hold 4 services in church each year (Easter, leavers', harvest and Christmas) and are regular visitors on other occasions. The school children also distribute harvest gifts to elderly villagers each year.

The Church Hall is used for church and village activities. Church activities include a weekly Kids' Kingdom Baby and Toddlers group (term-time), Kids Kingdom for under 11s on 2 Sunday mornings a month (term-time), plus Community Lunch in the hall (3rd Wednesdays) and on 4th Wednesdays we host a popular Coffee and Chat. Lunches are extremely successful and draw in around 30 people, with contributions and help from both church and village. The school provides 6, year 5 helpers each month - this provides an excellent rapport between young and old.



Most activities in the village centre around the church – Annual Fetes, seasonal activities, etc. which are well supported. There are thriving Cubs and Scouts groups (who parade at the Remembrance Sunday service) plus popular W.I., History, Cricket and football groups in the village.

St Bartholomew, Snarestone

Statistics 2022		Individual Parish details	
Baptisms	0	Village population	318
Weddings	0	Electoral Roll	20
Blessings	0	DCC number of members	Team Vicar + 6
Funerals	0	Meeting frequency	4 times per year
Interments of Ashes	0	Churchwardens	0
Av. Sunday Attend.	16		



We are a small village and church but that doesn't diminish our community spirit. We are a broadly Christian-spirited village, with many community activities going on, without being overtly Church goers.

St Bartholomew's is a small church building, re-ordered around 10 years ago, so there is a toilet, kitchenette, and flexible seating. The local village primary (Church of England) school visits church for Easter, Harvest and Christmas and their Leavers' Service.

The only community rooms in the village are the school hall & St Bartholomew's, so we sometimes also host some village activities. Over the last year or so activities have included Jubilee Songs of Praise, The Queen's Funeral, Harvest Supper, pudding evening, Mothering Sunday special, Easter Celebration, Coronation Breakfast, Coffee Morning in church & Christmas Carol service. We usually take turns with Norton Church to host the Christmas Eve midnight service.

As with most small village churches, our funds are tight. We have 11 Coffee Mornings a year to raise money for the church, hosted in various villagers' homes (last year we raised over £1,000).

Village groups include the Tote team who put on a Village Trip for all the children and the old folk resident in the village every year and a Christmas party for the same. We have a drama group who put on a yearly not-to-be-missed pantomime in February half-term. We have a Garden Group who meet every month either in school or on trips out to other gardens. The Globe pub supports the village and welcomes holidaymakers from the canal and the camping field to the rear of the pub. We also have a local village music Festival in August – SnareFest, and a professional Theatre Group visits every year and performs on the Rec grounds - the Micron Theatre.

Our once-per-month regular service has a small, committed congregation, however our occasional lay-led informal services, which villagers also sometimes help lead, bring many more attendees. Pre - Covid we had a very popular Walking Nativity in the village, which we hope to do again. Our challenge as a church is to encourage our villagers who support the church at events to come to church for worship too.



St Peter, Sweptstone and Newton Burgoland



Statistics 2022		Individual Parish details	
Baptisms	2	Households	680, approx. 300 households
Weddings	3	Electoral Roll	32
Blessings	0	DCC number of members	7
Funerals	3	Meeting frequency	Every 3 – 4 months
Interments of Ashes	0		
Av. Sunday Attend.	19		



Trish Newbold
Warden

St Peter's Church is a small but active community, which serves the two villages of Sweptstone and Newton Burgoland. Our Church Warden, Trish, is our organist and leads the Woodfield Team's choir, The Woodfield Singers, who meet once a week at Sweptstone Hall and sing regularly at churches across the Team for weddings and special services, and elsewhere when asked to sing at concerts. Our bell ringers group also ring for other churches in the Team. We have a Monday afternoon Craft Group which meets in the Church Hall and makes items for sale, the proceeds of which go to the upkeep of the Church Hall; the accounts are separate from the Church. Every third Wednesday we hold a Coffee and Chat event in the Church Hall. This is greatly appreciated by those who attend. We enjoy social events in Church and have held three concerts performed by outside groups, which were well attended.

We have special services such as "People's Church" led by members of the congregation, including children. Sweptstone Church is often chosen by wedding couples, the beautiful setting lends itself to the occasion. Church festivals are well attended, and the church is decorated according to the seasons, saints' days and special Sundays such as 'Sea Sunday'. Sweptstone and Newton are friendly caring villages where people look out for each other. Sweptstone does not have a pub, so the church is the centre of the village and community. The State School in Newton welcomes visitors from the church for assemblies etc. The Christmas Eve service is also special; many families walk from Newton with torches and lanterns to take part. We encourage wildlife by leaving an area of the large grounds free from cutting until late autumn. A small group of apple trees has also been planted to commemorate the coronation of King Charles.



St John The Evangelist, Donisthorpe

Statistics 2022		Individual Parish details	
Baptisms	1	Parish population	6017
Weddings	0	Electoral Roll	55
Blessings	0	PCC number of members	14
Funerals	2	Meeting frequency	Bi-monthly
Interments of Ashes	0	Churchwardens	0
Av. Sunday Attend.	21		

- we are a small, mature but supportive and active congregation, friendly and good-humoured.
- we have a strong tradition of pastoral care and fellowship.
- our finances are in good order and we make a significant annual Parish Contribution to the Diocese.
- we have strong links with our local non-church community and work closely together.
- we are a pleasant rural parish located at the centre of The National Forest, an area of natural beauty that offers a wide variety of recreational and educational opportunities.
- we are realistic in our expectations of our minister, with the formation of Minster Communities across the Diocese on the horizon.

In 2018 we celebrated St John's 180th birthday. The surrounding villages of Moira, Oakthorpe, Acresford and Stretton en le Field, together with Donisthorpe, make up the parish. We have regular worship and fellowship opportunities open to all. Special occasions in the church's year and the term ending celebrations for Donisthorpe Junior School, can fill the church to capacity.



Centred at the heart of The National Forest, the parish is covered by two Parish Councils.

A complete refurbishment of the interior of the church, currently underway, will open up the church to many activities from our schools and the community making it truly a "Building for All"; (Project Heart). This major reordering is costing in the region of £735,000 and all funding is in place. Whilst the work is ongoing until July 2024, we keep 'church' present in the village with Sunday worship and fellowship in the lounge bar of our local pub.

'Project Heart' has enthused both the village community and invigorated our church as we work and journey together to make this exciting venture a reality, providing a place where all can meet socially, in fellowship, celebration and worship thereby identifying St. John's as a central place of service in the everyday life of the community. (See You Tube videos for how Project Heart came about with an artist's impression of how the church will look when finished).

<https://youtube.com/watch?v=loejLeGkVyY&feature=share>

<https://youtu.be/qxmw-VHphuw>

Our mining history and heritage, together with our new 'greener' identity, surrounded as we are by National Forest woodland, are depicted in our windows and we have become an Eco Church. Our community has changed. We have accommodated overspill from the near-by conurbations of Birmingham, Tamworth, Leicester, and Derby; many residents now commute daily.

In summary, the Parish Church of St John's is a mixture of the old mining communities with their rich heritage and history and, over the past 15 years, a new growing influx of commuters and self-employed entrepreneurial types who are adding a modern vibrancy and young family growth. We see ourselves as an integral part of the community, fulfilling our chief purpose to worship and serve God and our parishioners.

An excellent future lies ahead of us, and this is a great place to live.



Saint Laurence Church Measham

Statistics 2022		Individual Parish details	
Baptisms	5	Village population	5374
Weddings	2	Electoral Roll	53
Blessings	0	PCC number of members	8 (2 vacant)
Funerals	12	Meeting frequency	6 times a year
Interments of Ashes	0	Churchwardens	0
Av. Sunday Attend.	32		



The church has a prominent position on the High Street in this large village, a former coal-mining community, now with much new housing. The 700-year old church building benefitted from grants to secure much of the stonework and glazing in recent years; the next quinquennial inspection is due in early 2024. A set



of 8 bells is rung regularly for services and festivals. The 2022 Accounts show a firm financial base. We are currently working towards achieving Eco Church status.

Currently, we have 2 or 3 clergy led services per month, with gaps filled by lay-led services, breakfast church being a recent, popular innovation. A Christingle service on Christmas Eve attracts 400+ from the Parish. The frontage of the church and church Hall are the main site for [Christmas@Measham](#), an annual village event attracting over two thousand visitors in 2022.



The recent vacancy has seen an increase in lay participation as members have been encouraged to explore and develop their gifts. A home study group seeks to nurture



newcomers and encourage existing members. Church members volunteer for various community groups. There is a strong relationship with [Measham CofE](#) School through a presence on the governors, visits to church, assemblies, and Open the Book. The church has supported the school financially over the last 2 years. Other children's work includes a bi-monthly parent and toddler group, a holiday club for primary age children and summer events for the Community, including Teddy Bears parachuting from the church. The Church Hall is used by many Groups and the Church itself runs Activeage, an exercise group for the over 60s. The Hall is often used as a venue for Woodfield Team courses and events. Additional meeting rooms are available in 'the Stables', a currently underused building on the site.



Holy Trinity, Normanton-le-Heath

Statistics 2022		Individual Parish details	
Baptisms	1	Village population	165 (2016 Census)
Weddings	1	Electoral Roll	18
Blessings	0	PCC number of members	6
Funerals	2	Meeting frequency	5 per year
Interments of Ashes	0	Churchwardens	0
Av. Sunday Attend.	12		

Normanton Le Heath is in a beautiful rural setting beside the Queen Elizabeth Diamond Jubilee Wood and within an active farming community. The church has a distinctive location on the brow of a hill with its spire being visible for miles around. The housing is varied in type and age and provides homes for a range of young families, professional people, and those in retirement.



The village is the smallest in the Woodfield Team with a small but committed congregation who support two regular services per month. We have close links with Holy Rood Church, Packington, through ministry and worship, with Sunday services alternating between the two churches and we share a monthly Parish News magazine and [Website](#). Team clergy look forward to officiating at our services and always appreciate the welcome they receive, as do other visitors from other churches in the Team. Our church has a hearing loop and sound system, and the organ is maintained but there is no resident organist. There are 2 bells in the bell tower that are rung at weddings or special occasions.

Being a medieval Grade II* listed church, significant repairs have been carried out over the last decade so that overall, the church is in a good state of repair. Our recently established village Lottery supports further fundraising for maintaining the village defibrillator and the fabric of the church. We are currently awaiting the outcome of several funding applications to finalise works to the guttering.



The church is the sole community building in the village and, therefore, a focal meeting point. Over time, the church has generated a strong sense of community and that is a real gift. Villagers work together to support fundraising for the church and local activities that help to bring the community together. These range from our summer fete, garden parties, ad hoc celebrations, such as the Platinum Jubilee and Coronation and concerts to an Advent Trail involving 23 houses, ending up at the Church on Christmas Eve.



The village is generous in its support of the church with annual donations to Christian Aid, Action for Children, and the Children's Society. A particular strength is its response to those more in need with annual food or toy donations to local centres at Harvest, Christmas and to support other crisis situations as they arise, such as the refugees from Ukraine.

Our church funds are on solid foundations through the diligence of our treasurer. We aim to increase our parish share annually and grow our charitable giving.

Our challenge for the future is to encourage our villagers, who support the church at social events, to join us for worship. We hope to extend our engagement with a growing number of families with young children beyond key church festival dates.

We are taking steps to involve those on the electoral roll with the wider conversations on the progress of the Minister Communities locally and how we can increase the active numbers on our PCC.



Holy Rood Church, Packington

Statistics for 2022		Individual Parish details	
Baptisms	4	Village population	851
Weddings	1	Electoral Roll	54
Blessings	0	PCC number of members	9
Funerals	8	Meetings	monthly
Interments of Ashes	5		
Av. Sunday Attend.	22		



Ivan Bowers
Churchwarden



Packington is a small but vibrant community, boasting a church school, an active Parish Council, a pub, a wonderful shop, a widely used village hall, a recreation ground and play area, and, since the twelfth century, a church! There are plenty of clubs and events, such as the duck race, bonfire celebrations and an Open Gardens Day. The church is very much an integral and respected part of the community, but we are always seeking to develop further our relationships with individuals and organisations within the village and the support and help which we can offer. Whilst we value historic traditions, we are also outward looking and are trying new initiatives. People like to gather together, and they like to eat! So - regular offerings of coffee and chat, tea afternoons and the occasional lunch, and our very popular Ladies Group (36 members) offers a wide variety of speakers and interesting visits.

We are also reaching out to children in holiday times by providing drop-in lunchtime sessions with toasties and cake, and a variety of crafts and activities. We have good links with the school, and the children are heavily involved in our annual Christingle Service. We are encouraging them to help with our development as an Eco Church - a new initiative.



We are of low church persuasion, but very flexible, and hold three services a month, (attendances average 22).

Alongside our Common Worship services, we have re-introduced a midweek BCP Holy Communion; tried something different once a month e.g. outside speaker, Celtic worship; provided a café church style of New Year's Day Service; and held Songs of Praise services.

We have consciously opened up our church facilities to local groups such as a new Community Choir and to everyone nearby simply needing the convenience of a toilet! The village Choir sang at our recent very successful Heritage event, held with the assistance of our Village History Society.

We are delighted that our bell-ringers are flourishing and training youngsters. We only have an organist, together with a small choir, at special services, but we have a new and effective digital church music system. We sing carols and drink mulled wine outside the pub at Christmas, with the help of the Salvation Army.

Our Church's finances are currently on a solid foundation and, in thankfulness for God's generosity, we contribute a tenth of our income to charity, and hold an annual charity bazaar. We have a very experienced lead on Safeguarding who ensures our training, policies and DBS checks are up to date.

Our very recent quinquennial inspection may identify needed works but, overall, the condition of the church appears good.

We cannot rest on our laurels! We should like to find ways of reaching out more to men and of expanding our work with children and young people. Our prayer is that God will guide us in the paths we need to take so that He has the opportunity to transform more lives with His love.

Team Vicar in the Woodfield Team, Rick Tett



Welcome to the role of Team Rector in the Woodfield team group of churches. On appointment to my role, I initially had oversight of the Appleby group of churches. After our Team Rector retired, alongside the Rural Dean, I helped look after the other four churches in the group. I am an ordained Church Army captain; my curacy was in the Worcester Diocese.

My wife Deborah and I moved into the Leicester Diocese a week before lockdown, so my first eighteen months were mainly doing online worship. We live in Appleby Magna in the vicarage on Rectory Lane.

In the role of Team Vicar, I am involved as a governor to the local primary school, Sir John Moore, trustee to the Misses Moore's Almshouses and trustee to the Sir John Moore Foundation.

I am originally from Brixham in Devon and served in the military for eighteen years. Deborah and I have been married for thirty-two years and we have two grown up sons, three grandchildren and two Labradors.

I look forward to meeting you and working with you as part of the shared ministry in the Woodfield Team.



October 2023 Confirmation service with Bishop Saju



Thanksgiving at Norton juxta Twycross

Other Members of the Ministry Team



Reverend Lesley Birtwistle
Retired Clergy



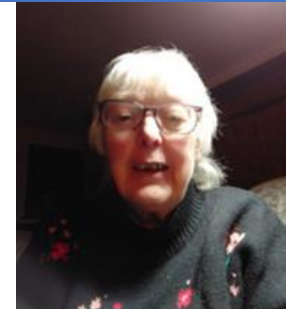
Reverend Chris Boulton
Retired Clergy



Reverend Brenda Campbell
Retired Clergy



Reverend Barry Dryden
Retired Clergy



Reverend Edwina Wallace
Retired Clergy



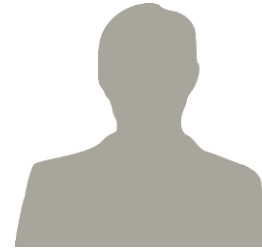
Mr Derek Tomlin
Reader



Mrs Norma Morris-Chapman
Reader



Mrs Debbie Kent
Reader



Mr David Harrison
Reader and Evangelist



Mrs Elisabeth Harrison
Evangelist



Mrs Judy Selby
Pastoral Assistant



Mrs Joan Smith
Pastoral Assistant



Mrs Ruth Salt
Team Administrator

WHERE YOU WILL LIVE

DESCRIPTION

The parsonage house is situated adjacent to St Laurence parish church off High Street, Measham. It was erected in 1957 by W H Dawson & Son of Ibstock to the design of H Goddard & Partners of Newton Harcourt. The house is constructed with 11" external cavity walls with facing brick to all elevations off a bitumastic felt damp proof course. A detached single garage was built in 1986. The pitched roofs were re-tiled in 1996, with a single storey dining room extension erected in 1998. PVCu-framed double glazed windows were installed in 2005 and a small porch was added to the front entrance of the house in 2007.

The accommodation to the ground floor comprises entrance porch, hall, study, living room / dining room, kitchen, utility room, cloakroom and WC. To the first floor are four bedrooms, bathroom and WC. An en-suite bathroom to bedroom 1 was provided in 1998. All main services are connected to the property. A Valiant gas-fired boiler heats radiators to all principal rooms, and supplemented by an immersion heater, provides domestic hot water.

The property grounds are laid predominantly to lawn with flower borders and are well-maintained. Part of the parsonage house front garden was transferred to the Diocesan Glebe in 1987, and subsequently leased to the local PCC, to enable a church hall to be erected.

